



Cigarette Receptacle

Installation Instructions for
Cigarette Receptacle - Wall Model

Tools Needed

- Tape Measure
- Safety Glasses
- Safety Gloves
- Screwdriver
- Drill
- Level

Hardware Needed

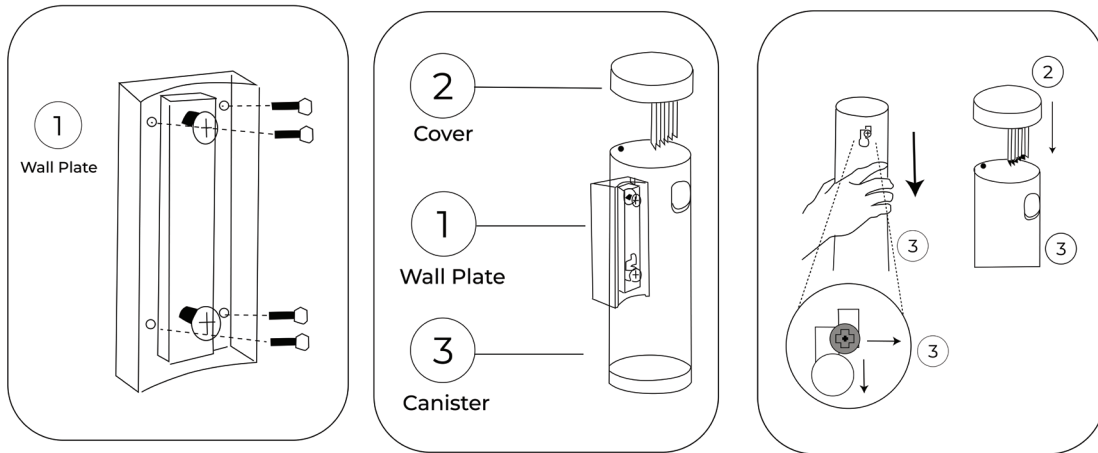
- All parts included

Installation

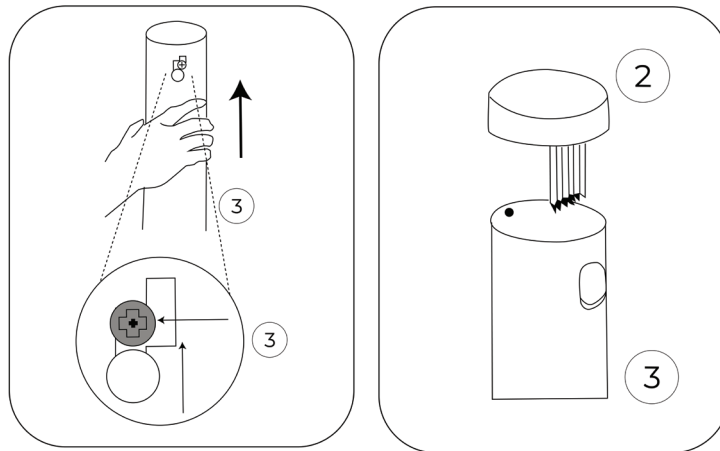
1. Open box and take out parts.
2. Fasten wall plate (1) to desired location (screws not supplied).
3. Attach canister (3) to wall plate (1) align keyhole.
4. Move canister (3) down.
5. Turn canister (3) right.
6. Move canister (3) down.
7. Snap cover (2) to top of canister (3).

To remove and clean:

1. To remove canister lift (3) up.
2. Turn canister (3) left.
3. Move canister (3) up and out.
4. Push button in on back, lift cover off (2) empty canister (3) and clean.



To remove and clean:



Parts Included

PART LIST	QUANTITY	DESCRIPTION
1	1	Wall Plate
2	1	Cover
3	1	Canister